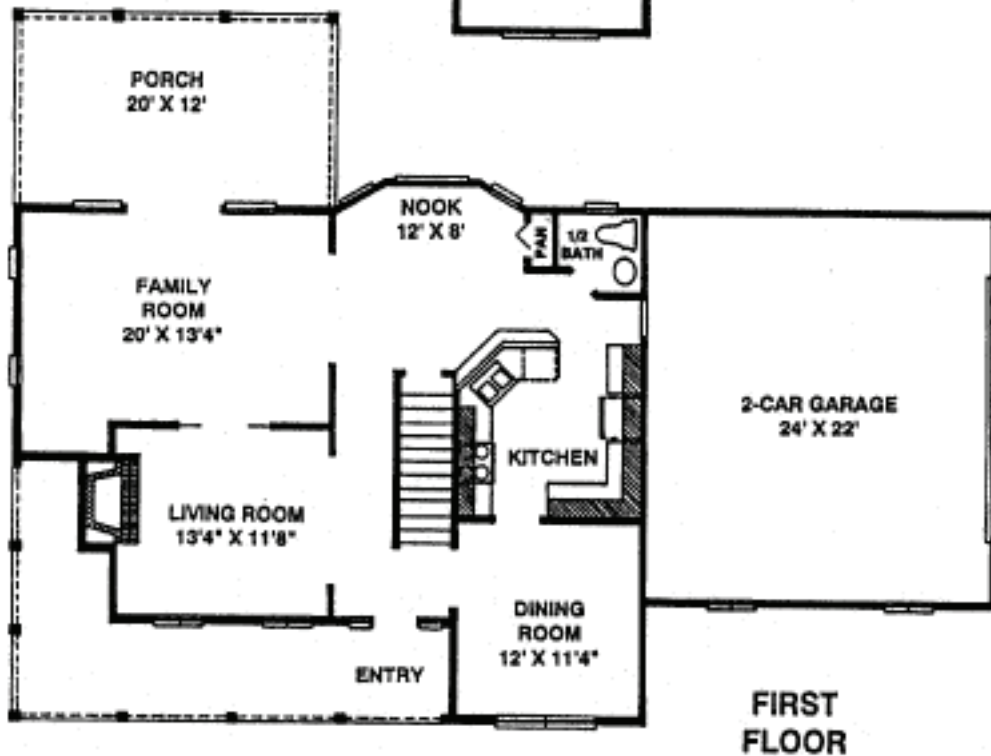
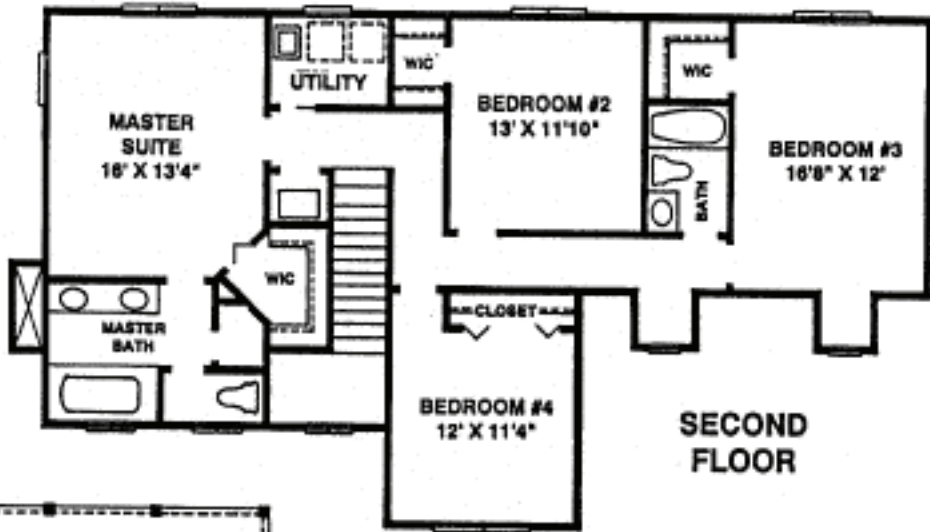


# THE BELLAMY



1st Floor - Living Area	1,061
2nd Floor - Living Area	1,278
Garage	542
Porch	240
Entry	213
<b>Total Under Roof</b>	<b>3,334</b>

## *Hi*CKMAN HOMES

"HOMES OF DISTINCTION"

(863) 646-1166

[WWW.HICKMANHOMES.NET](http://WWW.HICKMANHOMES.NET)

"Go Green" This document printed on recycled paper.